

Griffin Storm

Creating computer graphics

Line drawing + scanner



Background

Techniques:

- airbrush

 - Size

 - Colour swatches

 - Transparency (start 100%
details 5-25%)

 - Darken or Lighten to light
up/ create shadows

 - Add dots for smudge

- Smudge tool

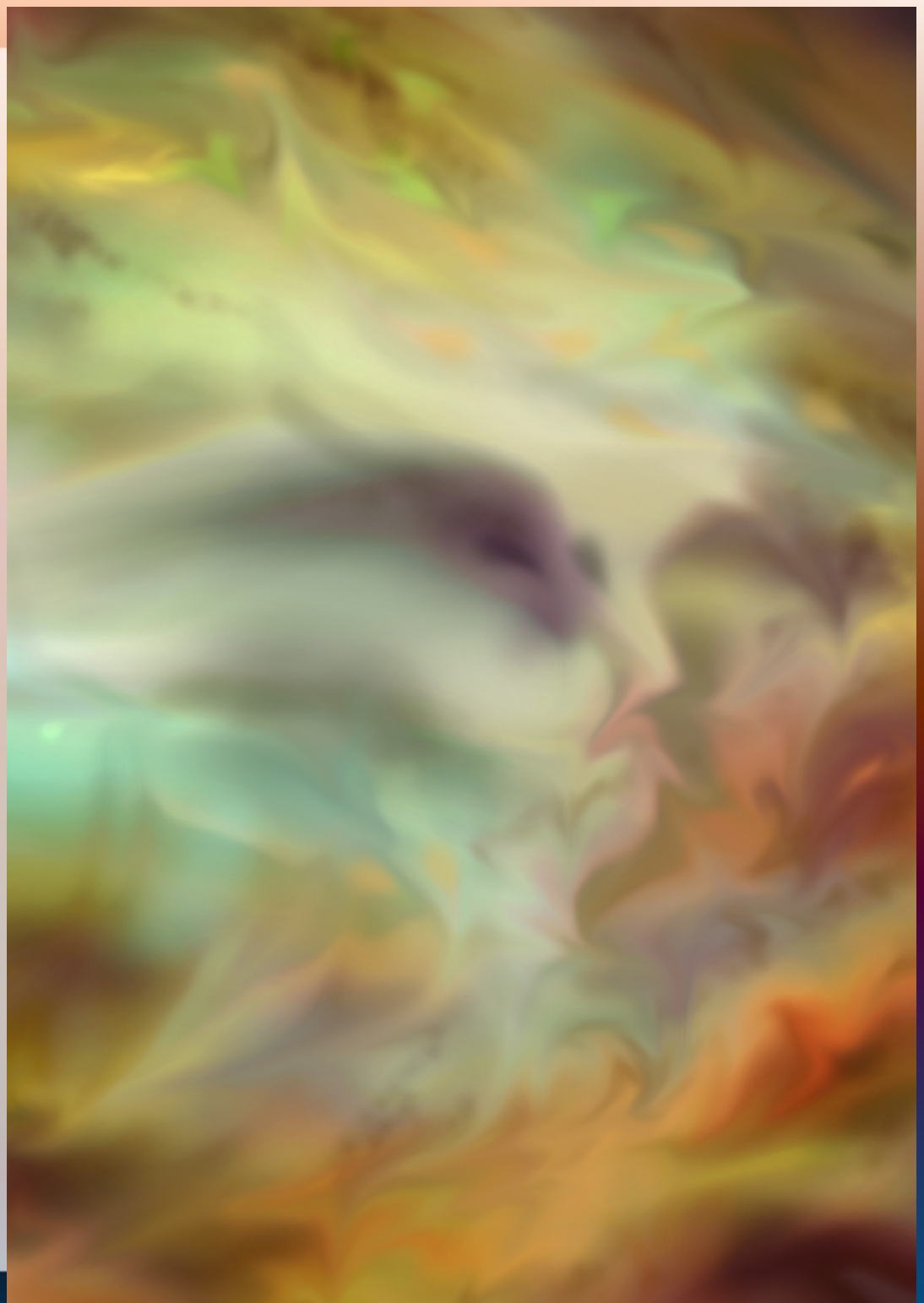
 - Normal: swipe all

 - Lighten: make lighter

 - Darken: make darker

 - Finger painting: start with
picked colour

 - %; transparency: intensity
of tool



Griffins

Use selection tool to select only the griffins, not the background

Fill in the colours using the airbrush tool transparent mode to keep seeing the line drawing

Add structure using the smudge tool and hard brush, artistic brush

Add shadow using transparent+black;

Add light using transparent +white

Adapt hue/ saturation/ contrast to match background later



Mounting

Use selection tools to select the griffins
Select – copy (or CTRL-C)

Open file with storm on the background

Edit-paste or CTRL-V

Position the griffins using the positioning
tool (hand)

Use smudge tool to integrate
foreground+background

Add shadow to small flying griffin by
using back airbrush+ transparency,
deselect small griffin first

Add autograph



THANK YOU FOR YOUR ATTENTION!

